



**Shanghai NC Metal Materials Co., Ltd.**

**[www.ncalloys.com](http://www.ncalloys.com)**

**Shanghai·China**

**Address: No. 7099, Beisong Road, Songjiang District,  
Shanghai, China**

**Phone: 18717923289**

**Email: [sales@ncalloys.com](mailto:sales@ncalloys.com)**

**Focusing on nickel-based alloys and creating high-end value**

A photograph of the Space Shuttle Columbia being launched from the Kennedy Space Center. The shuttle is ascending vertically, leaving a large, bright white and orange plume of smoke and fire. The launch pad and surrounding infrastructure are visible in the foreground and background.

# Contents

- **Company Profile**
- **Main Steel Grades and Models**
- **Product Categories**
- **Process Flow**
- **Testing equipment**
- **Application Fields**
- **Contact Us**

---

01

---

## Company Profile





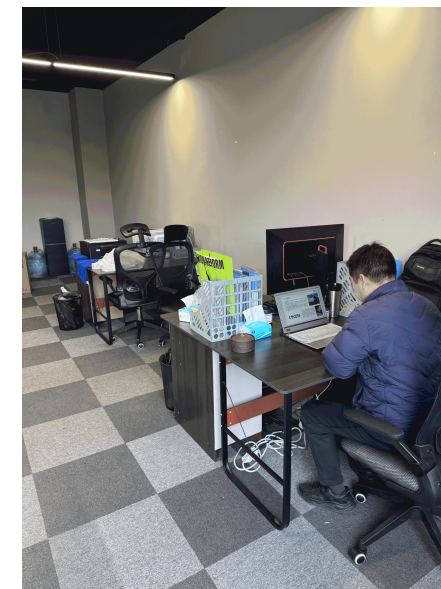
# Company Profile

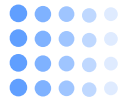
Shanghai NC Metal Materials Co., Ltd. is a high-tech enterprise specializing in the research, processing, and sales of nickel-based alloys. Adhering to the philosophy of "Focusing on nickel-based alloys and creating high-end value," we are committed to providing high-quality and reliable high-performance alloy material solutions to customers worldwide.

The company has a stable raw material supply chain, advanced processing capabilities, and a strict quality control system. Equipped with a full set of physical and chemical testing equipment, we strictly adhere to international standards such as ASTM, ASME, and GB. We support customized dimensions and processing services, with extensive export experience. Our products are widely exported to Europe, the United States, Southeast Asia, the Middle East, Japan, South Korea, and other countries and regions, earning the trust of customers globally.



"Focusing on nickel-based alloys and creating high-end value" is the core development philosophy that Shanghai NC Metal Materials Co., Ltd. has always upheld. We specialize in the research, processing, and application of nickel-based alloys, committed to providing high-performance, sustainable alloy material solutions suitable for extreme conditions to customers worldwide. With professionalism, we forge quality; with technology, we drive value.





# Company Advantages



## Technical Strength

The company possesses a highly skilled technical team with rich research and development experience and strong technological innovation capabilities. They are capable of providing customers with higher quality products and services.

## Product Quality

The company places great emphasis on product quality, incorporating advanced production equipment and testing instruments. Every stage, from raw material procurement to product delivery, undergoes rigorous quality inspections to ensure the stability and reliability of product quality.

## Serving Customers

The company consistently adheres to a customer-centric service philosophy. Regardless of when issues arise, the company responds promptly and efficiently to provide solutions, ensuring that customer production and lifestyle needs are met.

---

02

---

## Main Steel Grades and Models



# Common Grades of Special Alloys

Varieties	Name	Grade		
		GB/T	UNS	W.Nr.
Pure Nickel	Nickel 200	N6	N02200	2.4060 & 2.4066
	Nickel 201	N4	N02201	2.4061 & 2.4068
Hastelloy	Hastelloy C-276	NS3304	N10276	2.4819
	Hastelloy C-22	NS3308	N06022	2.4602
	Hastelloy C-2000	NS3405	N06200	2.4675
	Hastelloy C-4	NS3305	N06455	2.4610
	Hastelloy B-2	NS3202	N10665	2.4617
	Hastelloy B-3	NS3203	N10675	2.4600
	Hastelloy G-30	NS3404	N06030	2.4603
	Hastelloy X	GH3536	N06002	2.4665
Inconel	Inconel 600	NS3102	N06600	2.4816
	Inconel 601	NS3103	N06601	2.4851
	Inconel 625	NS3306	N06625	2.4856
	Inconel 690	NS3105	N06690	2.4642
	Inconel 718	GH4169	N07718	2.4668
	Inconel X-750	GH4145	N07750	2.4669
Monel	Monel 400	NCu30	N04400	2.4360
	Monel K-500	NCu30-3-0.5	N05500	2.4375

Varieties	Name	Grade		
		GB/T	UNS	W.Nr.
Incoloy	Incoloy 800	NS1101	N08800	1.4876
	Incoloy 800H	NS1102	N08810	1.4958
	Incoloy 800HT		N08811	1.4959
	Incoloy 825	NS1402	N08825	2.4858
	Incoloy 925		N09925	2.4852
	Incoloy 20	NS403	N08020	2.4660
Nimonic	Nimonic 75	GH3030	N06075	2.4951 & 2.4630
	Nimonic 80A	GH4080A	N07080	2.4952 & 2.4631
	Nimonic 90	GH4090	N07090	2.4632
	Nimonic 263	GH4163	N07263	2.4650
Waspaloy	Waspaloy	GH4738	N07001	2.4654
Cobalt-base alloys	Haynes 188	GH5188	R30188	
	Haynes 25	GH5605	R30605	
Precision alloys	NILO 36 (Invar 36)	4J36	K93600 & K93601	1.3912
	NILO 42	4J42	K94100	1.3917
	NILO K (Kovar)	4J29	K94610	1.3981

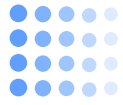


# Implementation Standard



Alloy Name	Implementation Standard ASTM							
	UNS	Seamless Pipe	Welded Pipe	Plate/Sheet/Strip	Rod/Bar	Forging	Wire	Pipe Fittings
Nickel 200	N02200	B161/B163	B725/B730	B162	B160	B564		B366
Nickel 201	N02201	B161/B163	B725/B730	B162	B160			B366
Hastelloy C-276	N10276	B622	B626/B619	B575	B574	B564/B472/B462	B574	B366
Hastelloy C-22	N06022	B622	B626/B619	B575	B574	B564/B472/B462		B366
Hastelloy C-2000	N06200	B622	B626/B619	B575	B574	B564/B472/B462		B366
Hastelloy C-4	N06455	B622	B626/B619	B575	B574			B366
Hastelloy B-2	N10665	B622	B626/B619	B333	B335	B564/B472/B462		B366
Hastelloy B-3	N10675	B622	B626/B619	B333	B335	B564/B472/B462		B366
Hastelloy G-30	N06030	B622	B626/B619	B582	B581	B472/B462		B366
Hastelloy X	N06002	B622	B626/B619	B435	B572	AMS 5754		B366
Inconel 600	N06600	B167/B163	B516/B517	B168	B166	B564	B166	B366
Inconel 601	N06601	B167/B163	B516	B168	B166		B166	
Inconel 625	N06625	B444	B704/B705	B443	B446	B564		B366
Inconel 690	N06690	B167/B163	B516	B168	B166	B564	B166	
Inconel 718	N07718	B983		B670/B906	B637	B637	B637	/
Inconel X-750	N07750			AMS 5542/5598	B637	B637	AMS 5698/5699	/





# Implementation Standard



Alloy Name	Implementation Standard ASTM							
	UNS	Seamless Pipe	Welded Pipe	Plate/Sheet/Strip	Rod/Bar	Forging	Wire	Pipe Fittings
Monel 400	N04400	B165/B163	B725/B730	B127	B164	B564	B164	B366
Monel K-500	N05500	/	/		B865	B865	B865	/
Incoloy 800	N08800	B407/B163	B515/B514	B409	B408	B564		B366
Incoloy 800H	N08810	B407/B163	B515/B514	B409	B408	B564		B366
Incoloy 800HT	N08811	B407/B163	B515/B514	B409	B408	B564		B366
Incoloy 825	N08825	B423/B163	B704/B705	B424	B425	B564		B366
Incoloy 925	N09925				B637	B637		
Incoloy 20	N08020	B729	B468/B464	B463	B473	B472/B462	B473	B366
Nimonic 80A	N07080				B 637	B637	B637	
Nimonic 90	N07090				AMS 5829	AMS 5829	AMS 5829	
Nimonic 263	N07263			AMS 5872				
Waspaloy	N07001		AMS 5586	AMS 5544	B637	B637		
Haynes 188	R30188			AMS 5608	AMS 5772			
Haynes 25 (L-605)	R30605			AMS 5537	AMS 5759			
NILO alloy 36 (Invar 36)	K93600			B388 & B753				
NILO alloy 42	K94100	F30	F30	B753/F30	F30		F30	
NILO alloy K (Kovar)	K94610	F15	F15	F15	F15	AMS 7727	F15	

---

**03**

---

## Product Categories



## Seamless Pipe & Welded Pipe

---

**Product:** Welded, Seamless.

**Applications:** Chemical plants, Petrochemical plants, Pulp & Paper mills, Food & Beverage plants, Oil & Gas industries.

**Outer Diameter (mm):** 0.3-1000mm or as per customer requirements.

**Wall Thickness (mm):** 0.05-20.0mm or as per customer requirements.

**Length:** 6 meters or as per customer requirements.

**Standards:** ASTM, ASME, GB, DIN, ISO.

**Manufacturing Methods:** Cold drawing, Cold rolling, Hot rolling.

**Delivery Time:** This depends on the total quantity of your pipe order and the availability of these raw source materials. Typically, it takes around 3-10 weeks from order initiation to production completion.





## Rod/Bar

---

**Product Specifications:** Diameter 6-600mm \* Length  $L < (6000\text{mm})$ .

**Production Process:** Forging or Rolling.

**Production Cycle:** In stock, **Batch customization:** 7-25 working days.

**Delivery Condition:** M Annealed (A), R Annealed, STA Solution Annealed.

**Standards:** ASTM, ASME, GB, DIN, ISO.

**Inspection Items:** Ultrasonic Testing, Chemical Composition, etc.

**Packaging:** Wooden box packaging.



# Plate/Sheet/Strip

---

**Thickness:** 0.05mm-100mm.

**Width:** 5mm-2500mm.

Surface Treatment:

Grinding/Polished/TR/Annealed.

**Standards:** ASTM, ASME, GB, DIN, ISO.

**Packaging:** Wooden pallets/wooden boxes.

**Delivery Time:** This depends on the total quantity of your order and the availability of these raw source materials. Typically, it takes around 3-4 weeks from order initiation to production completion.







## Wire

---

**Specifications:** 0.1mm-6mm

**Supply Form:** Wire, fixed-length  
crimped terminals

**Application Fields:** Aerospace,  
Aerospace Engines, Oil Drilling MWD,  
Grid Equipment, Low-Temperature  
Heating Pipe, Nuclear Power Plant.

**Standards:** ASTM, ASME, GB, DIN,  
ISO.

**Surface Condition:** Oxidized, Polished.  
**Packaging:** Wooden box packaging.



# Flanges & Forgings

**Specifications:** 1/2" (15NB) to 48" (1200NB).

**Strength Grade:** Above 900-1600MPa.  
Operating Temperature: -250°C to 1300°C.

**Coating/Surface Treatment:** Oil Black Paint, Rust-proof Paint, Yellow Transparent, Cold/Hot Dip Galvanized.

**Pressure Ratings:** Class 150, 300, 400, 600, 900, 1500, 2500. PN6, PN10, PN16, PN25, PN40, PN64, etc.

**Application Fields:** Petroleum, Marine, Water, Ships, Natural Gas, Power, Pipeline.





# Valves

**Products:** Nickel Ball Valves, Nickel Gate Valves, Nickel Globe Valves, Nickel Check Valves, Nickel Butterfly Valves, Nickel Plug Valves, Nickel Diaphragm Valves, Nickel Discharge Valves, and Customized Valves.  
Design Standards: HG, GB, JB, API, ANSI, ISO, BS, DIN, NF, JIS, and other standards.

**Application Fields:** Chemical, Petrochemical, Metallurgy, Nuclear Energy, Offshore Development, Power Plant Desulfurization, etc.

**Applicable Media:** Hot Alkali Liquids, Alkali Sulfides, Ambient Temperature Sulfuric Acid Phosphoric Acid, Acetic Acid, Fatty Acids, Dry Ammonia Gas, Ammonia, Hydrogen Fluoride, etc.  
Actuation: Handwheel, Bevel Gear, Electric, Pneumatic, etc.

**Packaging:** Wooden box packaging.





# Bolts & Nuts

---

**Products:** Bolts, Screws, Studs (Threaded Rods), Nuts, Washers, Rivets, Non-standard Products, Precious Parts, Press Dies, Cast Parts, etc.

**Diameter:** M1-M100 (Customizable)

**Length:** 2mm-3000mm

**Standards:** ASTM, ASME, GB, DIN, ISO

**Color:** Grey, Silver

**Function:** Fastening

**Delivery Time:** In stock, Customization 3-30 days.



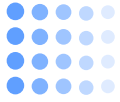
---

**04**

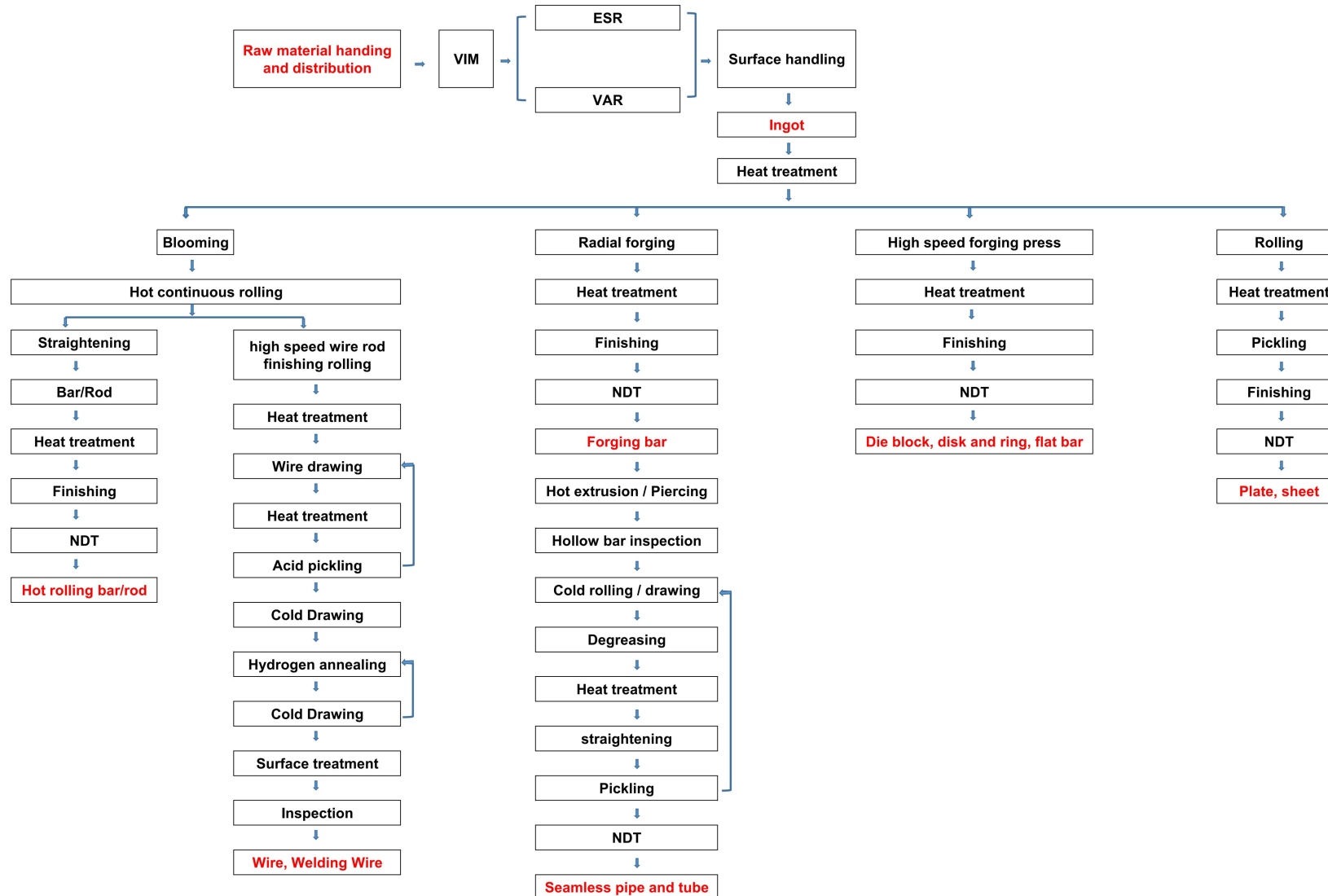
---

Process Flow





# Process Flow

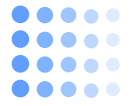


---

**05**

---

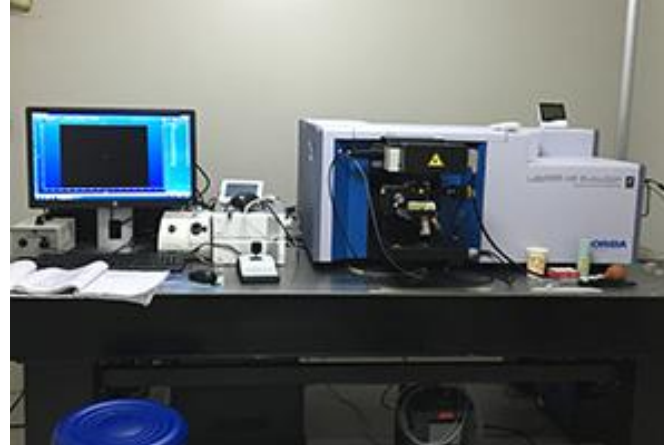
Testing equipment



# Testing equipment



Ultrasonic Testing



Spectrometer



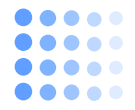
Metallographic Microscope



Intergranular Corrosion Testing Equipment



Rapid Annealing Furnace



# Testing equipment



Tensile Testing Machine



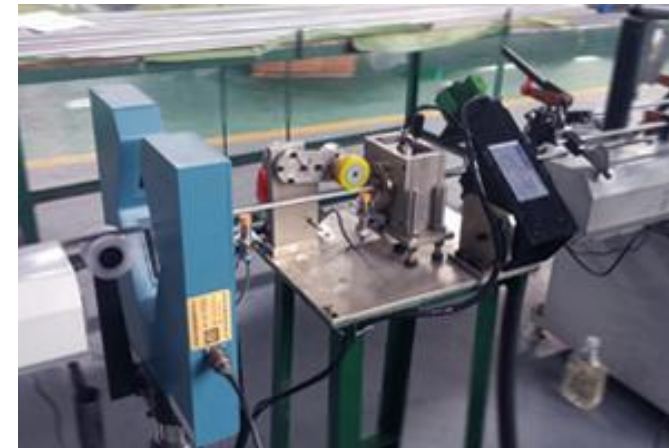
Rockwell Hardness Tester



Endoscope



Handheld Spectrometer



Eddy Current Testing

---

06

---

Application Fields





# Application Fields



Aerospace



Nuclear Power Sector



Chemical Industry Field



Military Industry Field



Desalination

---

07

---

Contact Us



# 联系我们

01



**Office Location**



No. 7099, Beisong Road,  
Songjiang District,  
Shanghai, China

02

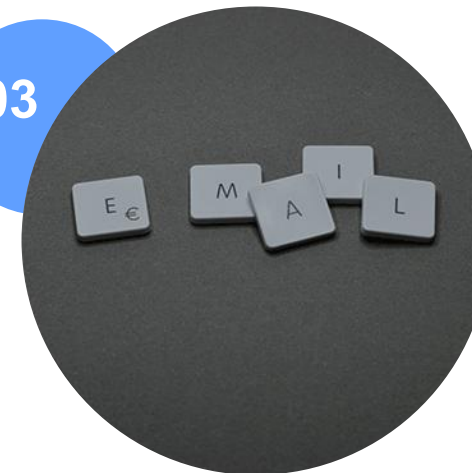


**Phone Number**



+86 18717923289

03



**Email Address**



[sales@ncalloys.com](mailto:sales@ncalloys.com)